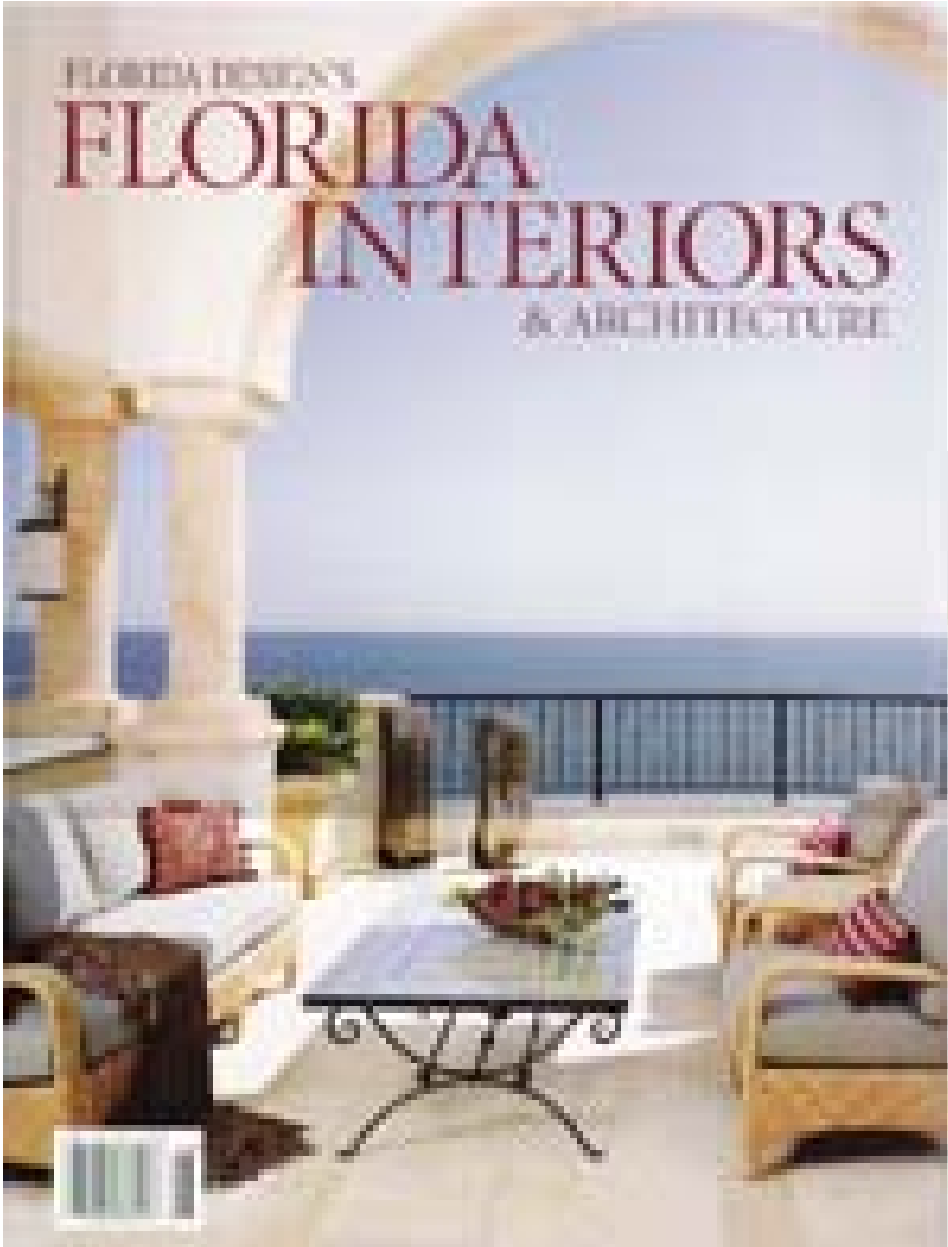


FLORIDA DESIGN'S

# FLORIDA INTERIORS & ARCHITECTURE



# ANGLES DESIGN ASSOCIATES, INC.

561.743.0267 | West Palm Beach, FL  
Photography by Robert Shaw, Palm Beach, FL



Architect Manuel Angles heads the award-winning architectural firm, Angles Design Associates, Inc., which has been in business for 20 years. An architecture graduate from the University of Miami, Angles has designed more than 300 projects throughout the United States, including Florida, New York, Washington, D.C. and South Carolina, the Bahamas and the British West Indies. Inspired by Le Corbusier, Addison Mizner and Andres Bello, Angles takes an active role in the design process working closely with clients to fulfill their desires in an exciting and innovative way. With offices in Miami and West Palm Beach, the full-service firm offers residential development and commercial design as well as land planning services. *Sarasota, Florida Architecture*, *Luxury Florida Homes* and *Professional Suburb* are among the publications that feature its work. State License No. 9238



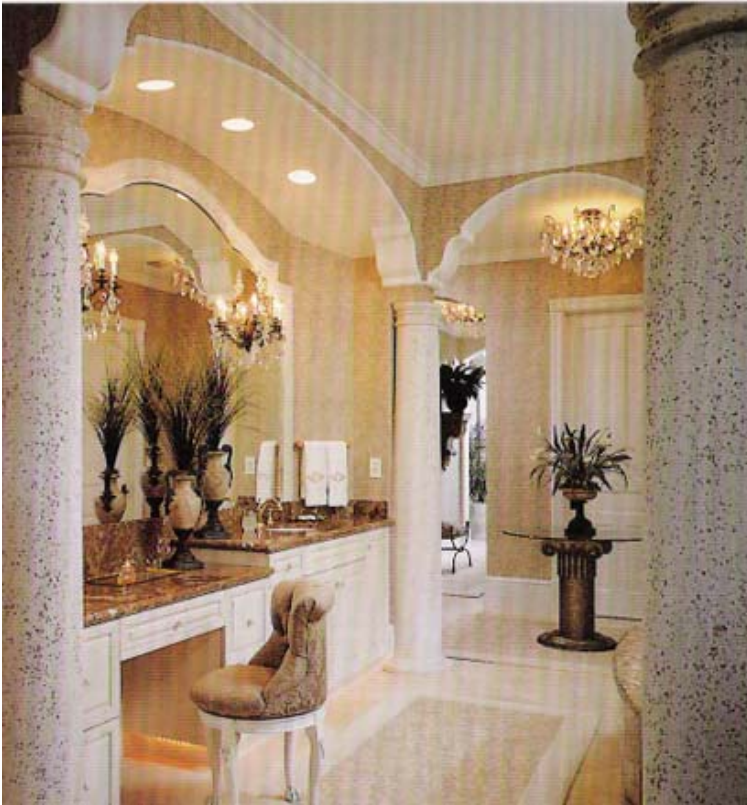
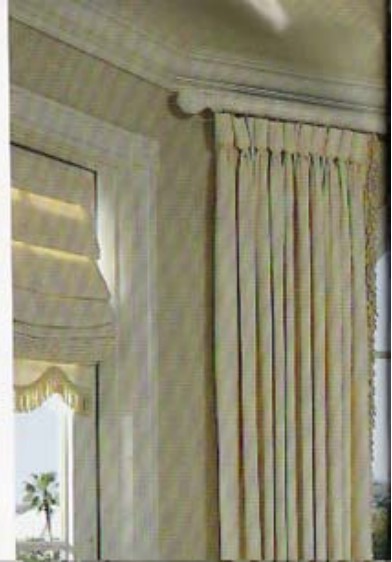
#### LEFT

Architectural details distinguish the dining room, such as the hand-painted cove ceiling, deeply set arched niches and stone columns that introduce the space. Old World statues pose in niches that flank another niche designed to hold the buffet. Crown molding adds the finishing touch.

#### OPPOSITE PAGE

Twin palms frame the walkway of this gracious Mediterranean home on Hutchinson Island in Stuart. Barrel-tile roofs and arched windows enhance the European feel. Angles positioned the landscaping and courtyard to establish a "procession of spaces leading from the street to the private areas of the home," he says.







FRONT ABOVE

Rustic wood beams and an ornate, wrought-iron railing showcase Angles' attention to detail. A trio of arched, paned windows wraps the stairway wall, filtering the sun's bright rays. The upstairs sitting area offers a comfortable place to read in peace.

FACING BELOW & ABOVE

Angles placed arches instead of doors at both ends of the owner's dressing area in the master suite to create a flow from space to space. An octagonal-shaped, recessed ceiling defines the bed and sitting area in the master suite. French doors open to a private balcony that overlooks the waterway.